

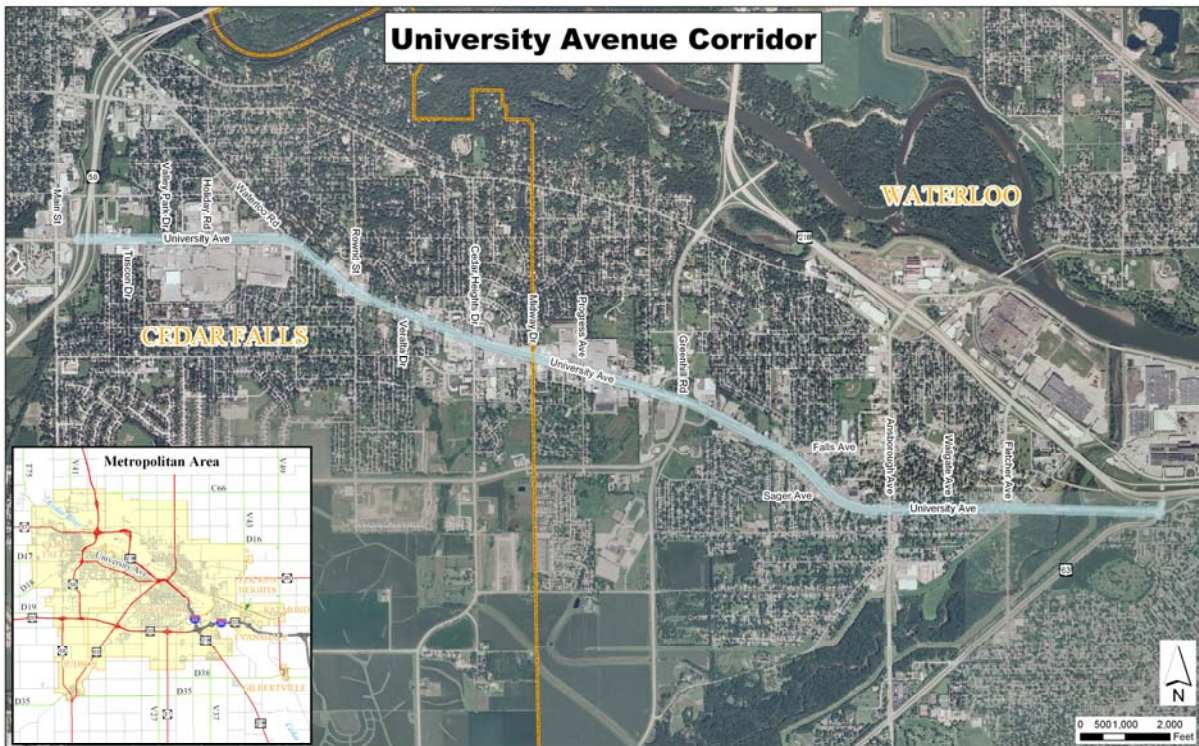
**UNIVERSITY AVENUE CORRIDOR STUDY
PROJECT UPDATE NO. 1
OCTOBER 17, 2008**

INTRODUCTION

This web page provides information on the University Avenue Corridor Study in Cedar Falls and Waterloo, Iowa. Here you will find information about the project, plans for upcoming activities, and a place to provide your input.

PURPOSE OF STUDY

The Iowa Northland Regional Council of Governments (INRCOG), along with the cities of Cedar Falls and Waterloo and the Iowa DOT, is initiating a study of University Avenue between Iowa Highway 58 and U.S. Highway 63. The purpose of this study is to examine the various needs along University Avenue and to develop a master plan that would guide any future reconstruction.



PROJECT DESCRIPTION

University Avenue is currently a 6-lane, major arterial street which carries traffic volumes of 15,000 to 20,000 vehicles per day. University Avenue was formerly U.S. Highway 218, and served as the main link between parts of Waterloo and Cedar Falls.

Since relocated U.S. 218 was constructed in the 1980s, some of the traffic characteristics on University Avenue have changed, and traffic volumes on some segments have declined. Because of these changes, the cities and DOT now have the opportunity to re-examine the roadway layouts and to develop future plans that more effectively meet the current needs.

OVERVIEW AND CORRIDOR STUDY

The current study began in September 2008 and will evaluate a variety of functions that may be needed in this corridor. Included are such items as:

- Through Traffic, Traveling Between Waterloo and Cedar Falls
- Local Traffic, With Either an Origin or Destination Along University Avenue
- Access to Properties and Businesses
- Traffic Safety Considerations
- Bicycle Traffic
- Pedestrian Traffic
- Public Transportation (Bus Routes, Bus Stops, Etc.)
- Emergency Services, Including Police, Fire and Ambulance
- Utilities
- Roadway Lighting
- Aesthetics and Appearance of University Avenue

The study is being conducted by a team of professional engineers, planners and landscape architects, including:

- Iowa Northland Regional Council of Governments (INRCOG)
- City of Cedar Falls
- City of Waterloo
- Iowa Department of Transportation
- AECOM (Lead Engineers)
- Confluence (Landscape Architects)
- Robinson Engineering (Traffic Counts)
- Public Involvement, Unlimited (Local Coordination)

The study will evaluate each segment of University Avenue and will identify possible improvements in the roadway itself, in the ways that driveways and side streets connect to University Avenue, and in the other amenities that might be provided in the right-of-way.

EXISTING CHARACTERISTICS OF UNIVERSITY AVENUE

Some of the existing characteristics of University Avenue are illustrated below.



Typical view of frontage road and median near College Square Shopping Center.



Looking west from Veralta Drive. No sidewalks or bikeways are present along most of University Avenue.



Looking east from Midway Drive. Many businesses have driveways connecting directly to University Avenue.



Looking east from Fletcher Avenue. Traffic volumes drop off considerably in this segment.

UPCOMING SCHEDULE

The University Avenue Corridor Study will continue through the next year and will be completed by November 2009. Some of the milestone activities that are planned include:

- Traffic Counts: Already Completed
- First Public Informational Meeting: December 2008
- Develop Initial Concepts for University Avenue: March 2009
- Second Public Informational Meeting: Late Summer 2009
- Finalize Recommendations: September 2009
- Final Report: November 2009

CONTACT US

If you have any input, comments or questions, please contact us by e-mail at bob.lentz@aecom.com. You can also print and mail us a copy of the [Stakeholder Survey](#) at any time.